



Fast Protein Liquid Chromatography (FPLC)

1. Packing



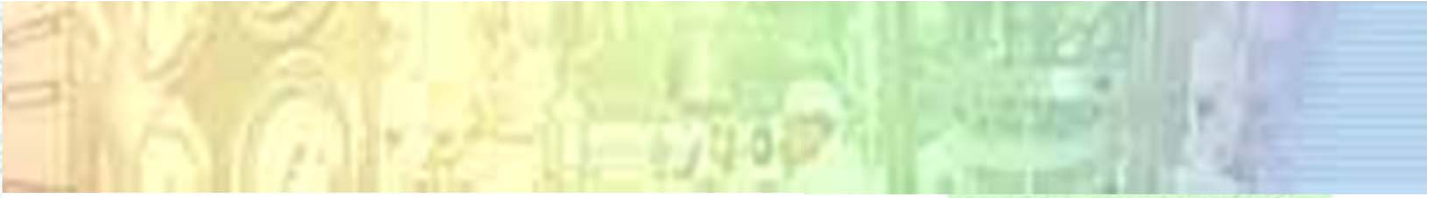
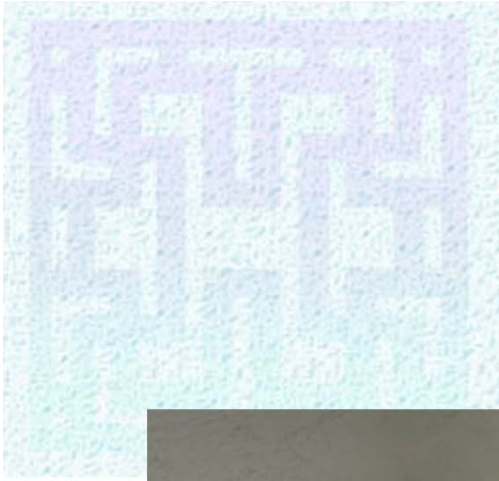
Column components





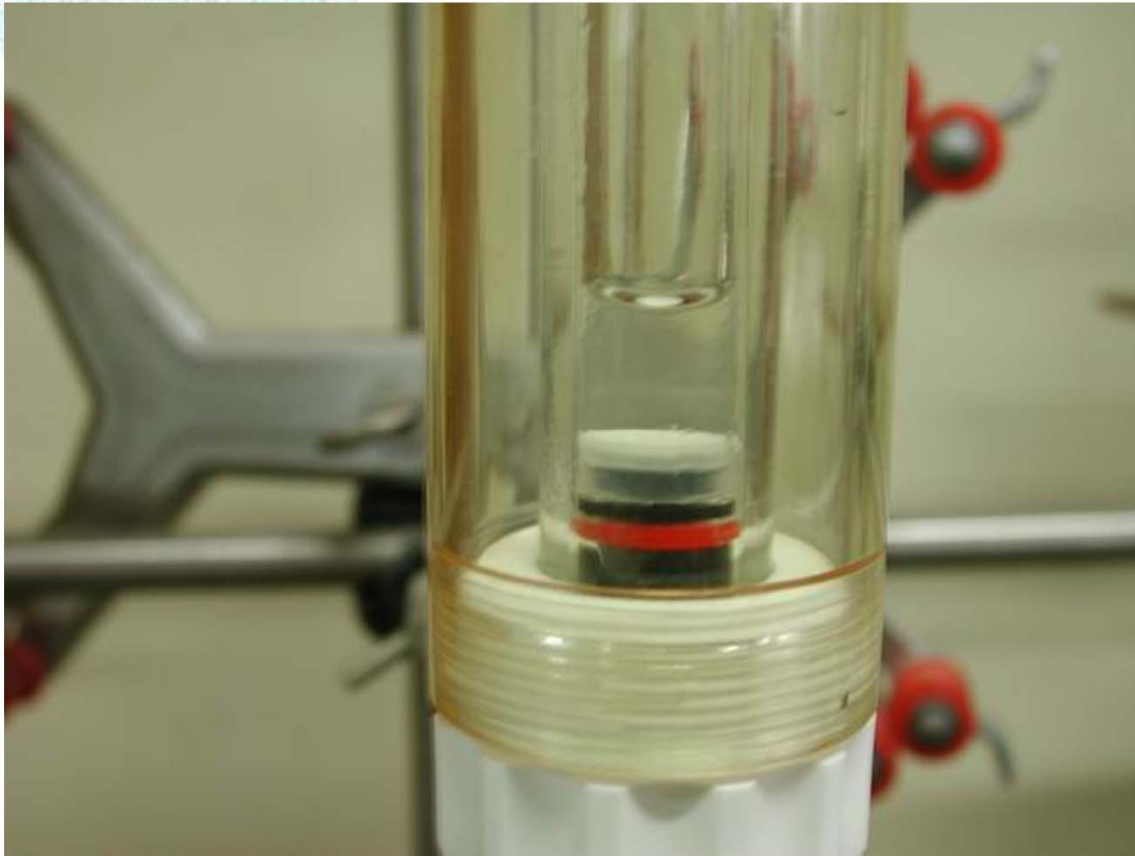
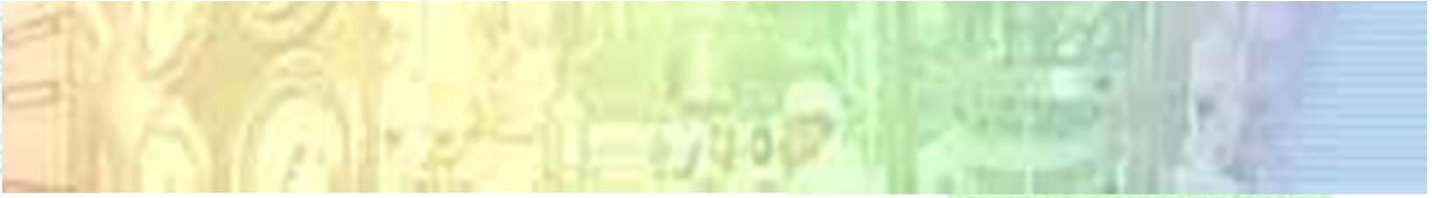
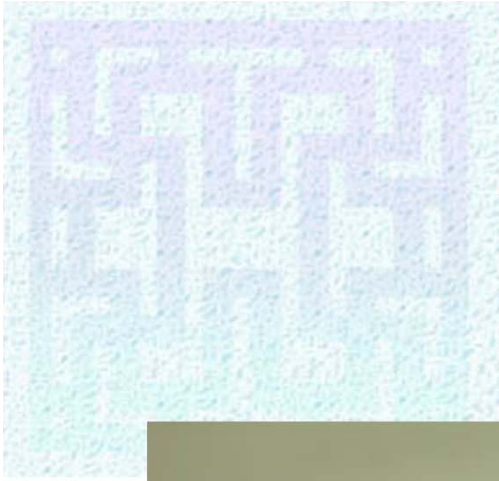
Gel degassing.





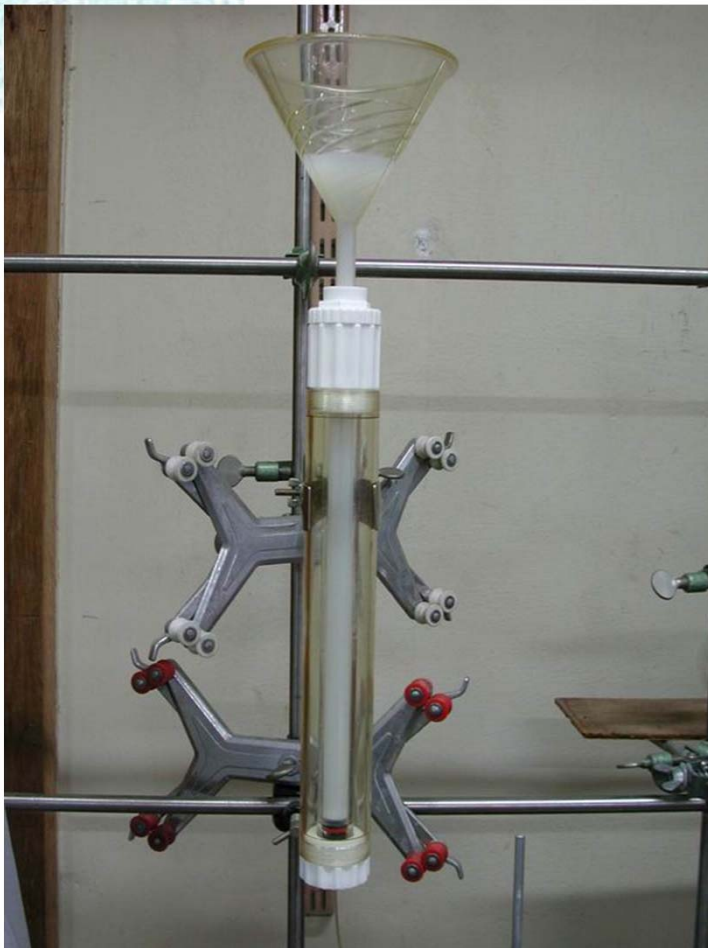
Stopping the outlet
of the column.





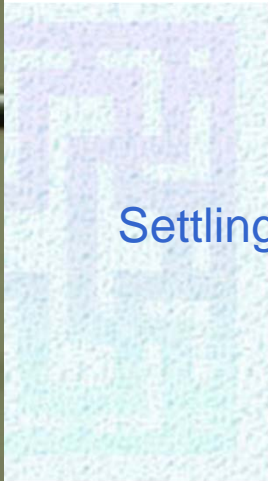
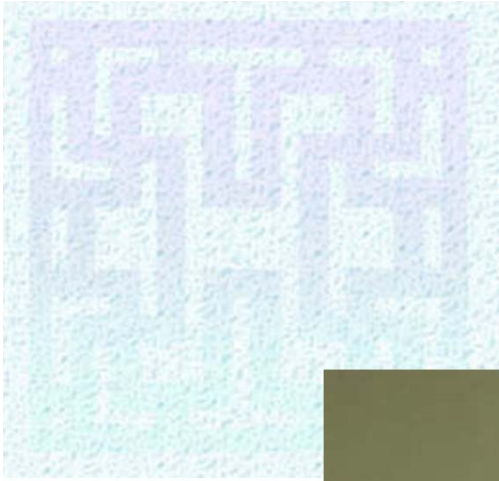
Filling liquid in the bottom of the column





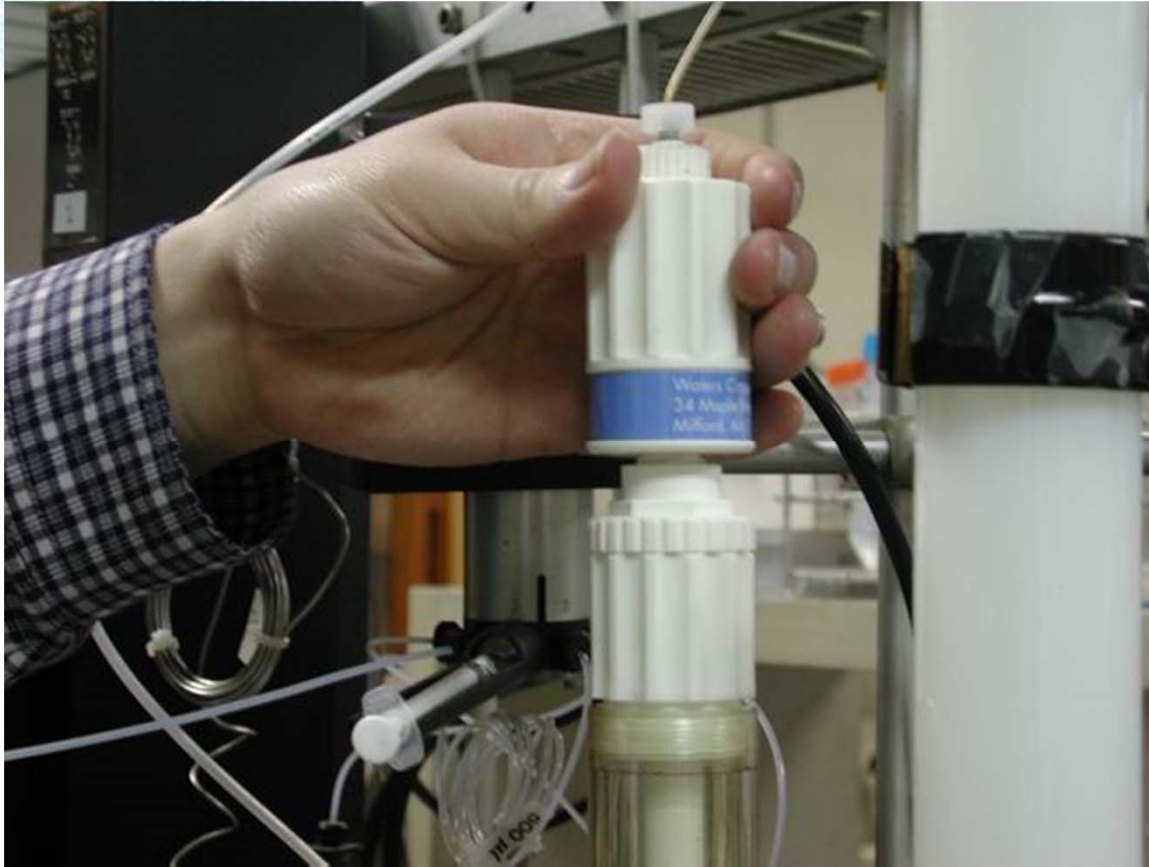
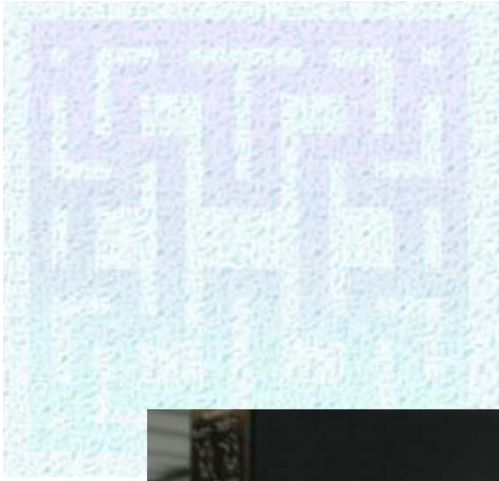
Pouring gel slurry to the column.





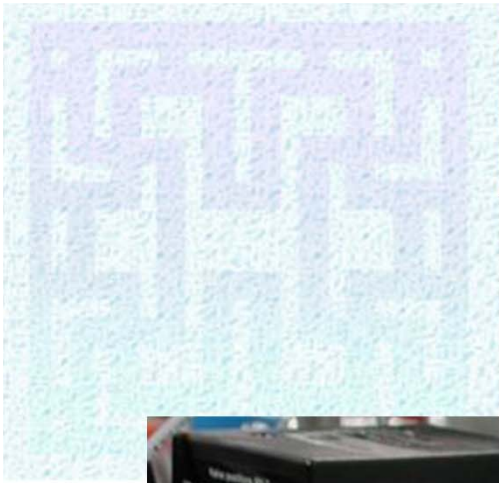
Settling of gels.





Adjusting the adaptor



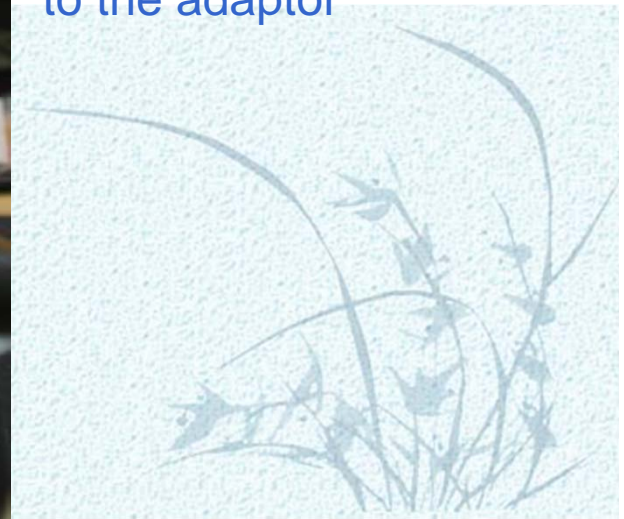


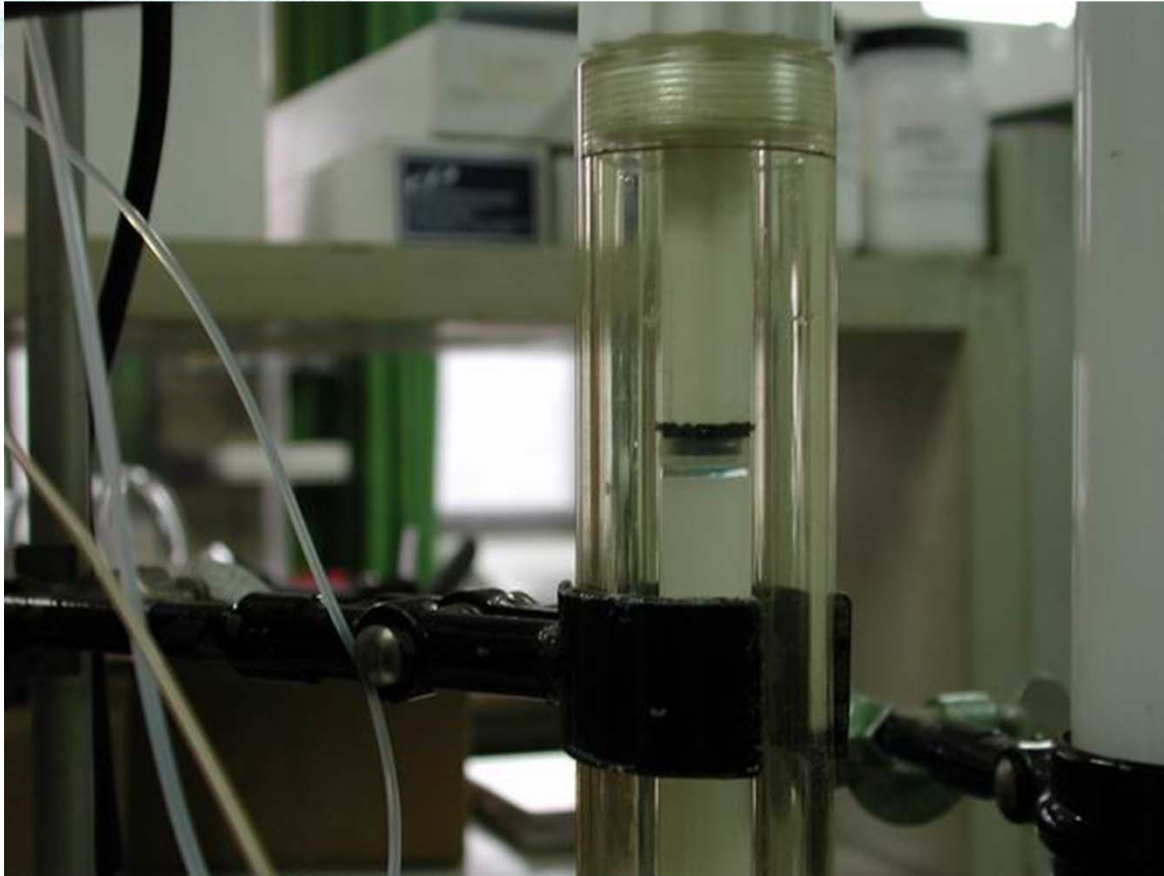
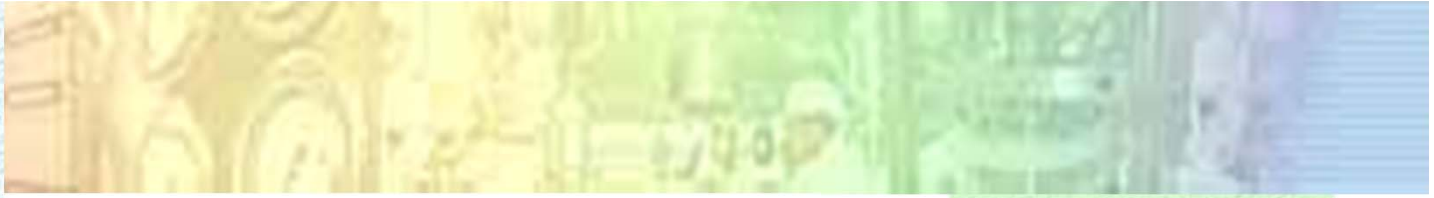
Fixed adaptor



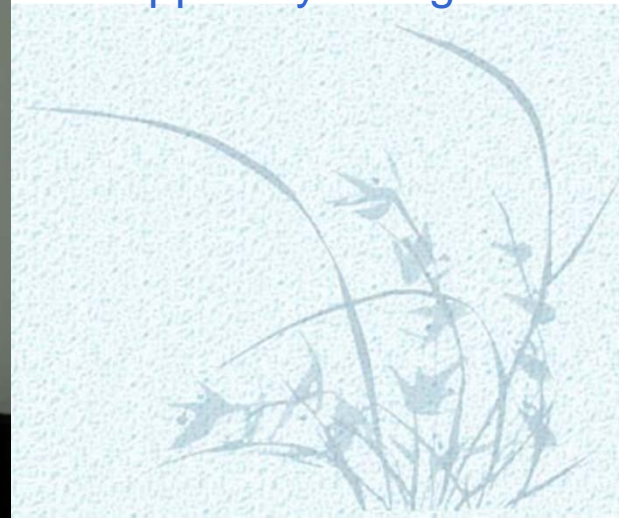


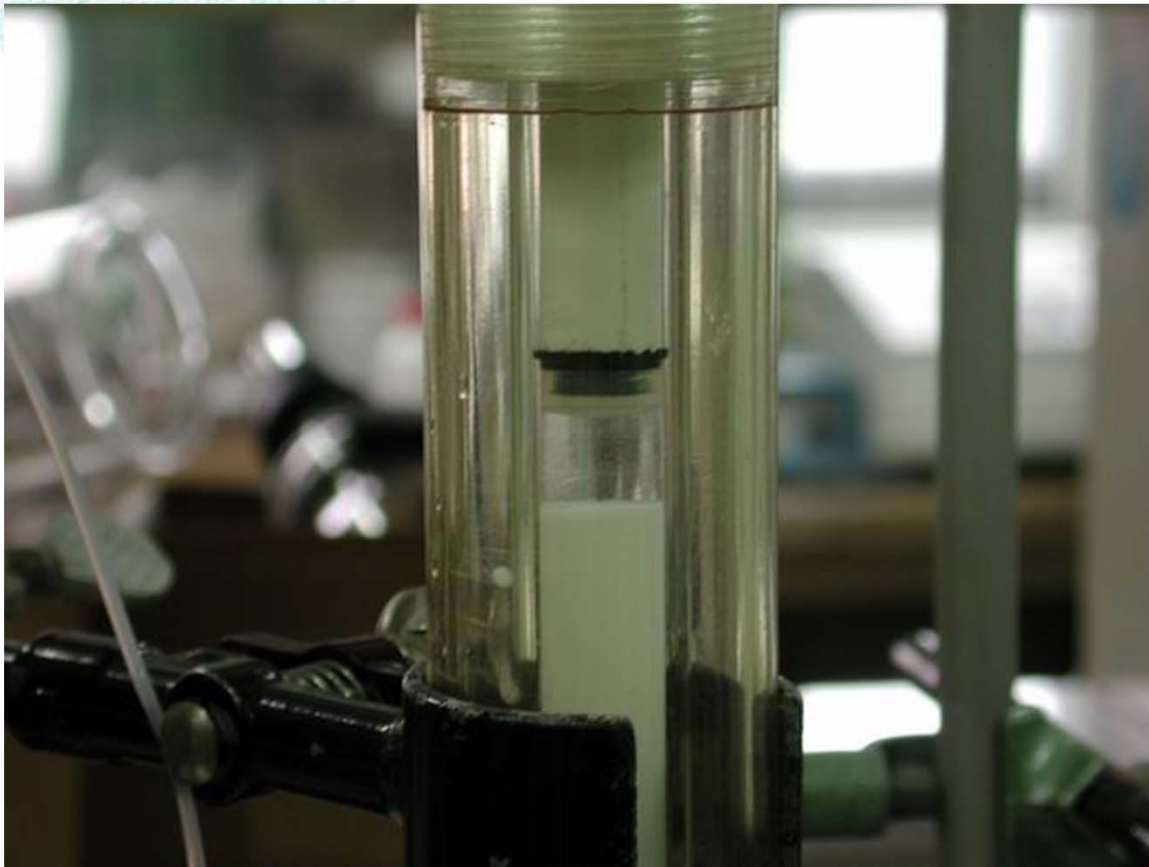
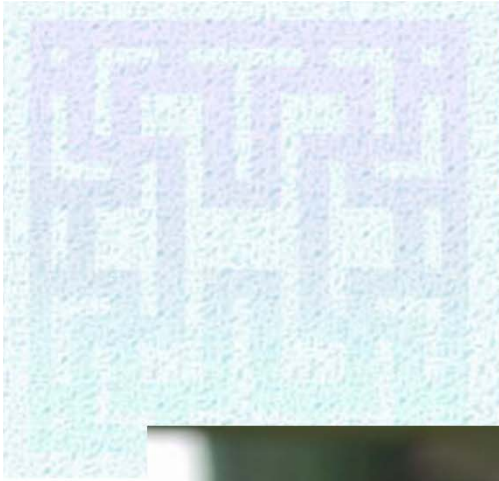
Conneting a line
to the adaptor



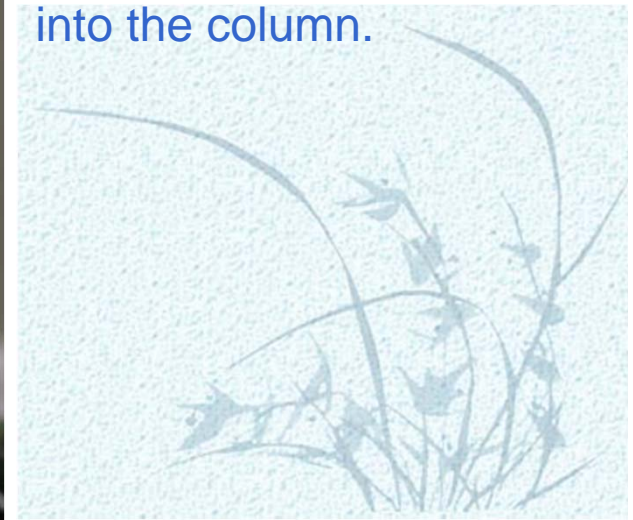


Adaptor touching the upper layer of gels.





Gel level lowers due to the solution flow into the column.



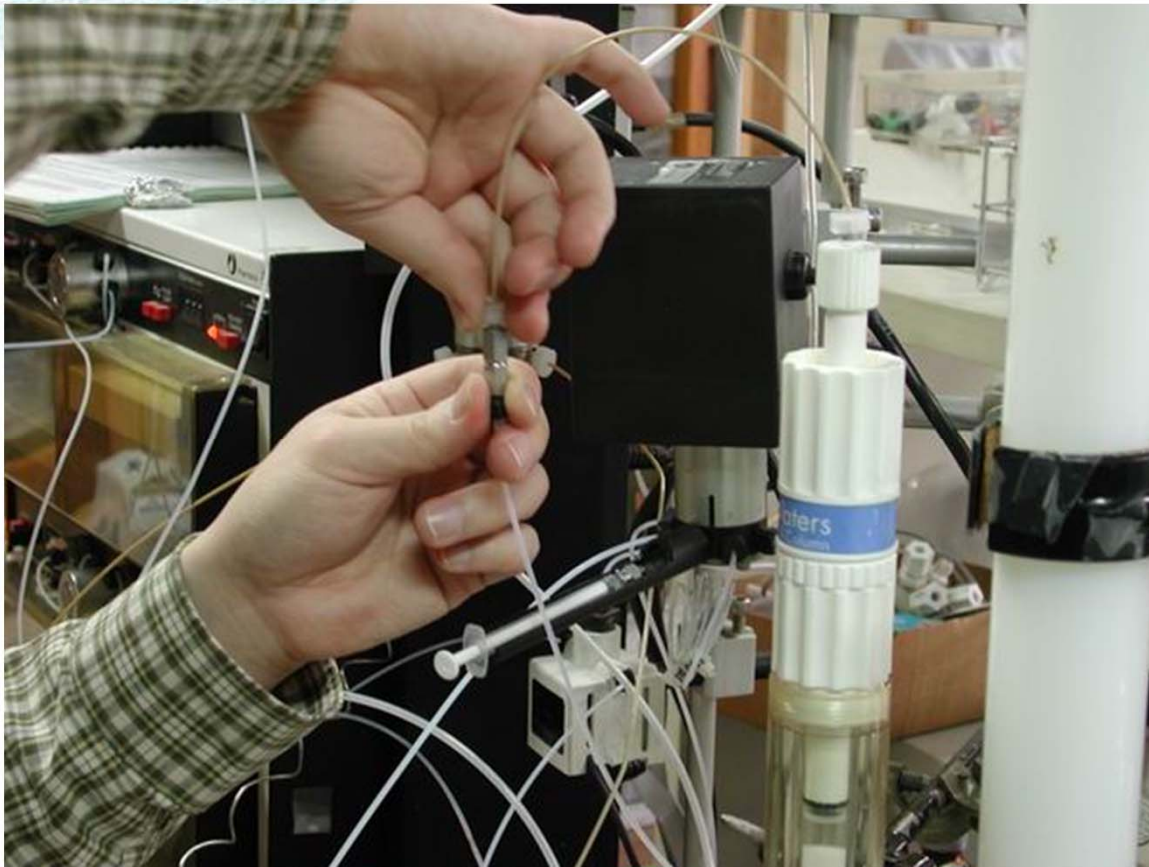
Chungnam
National University



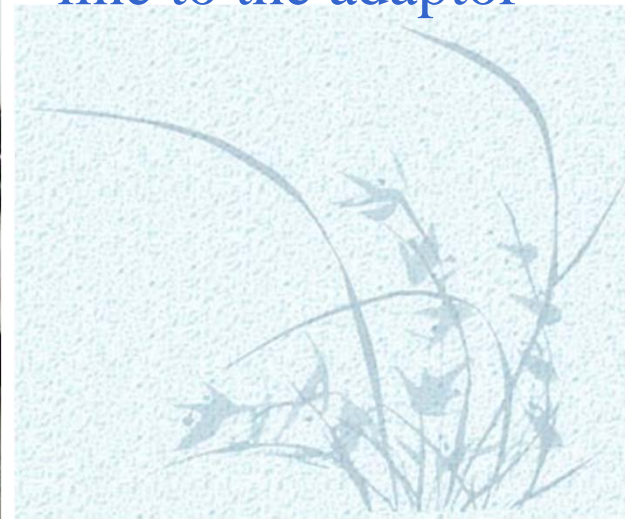


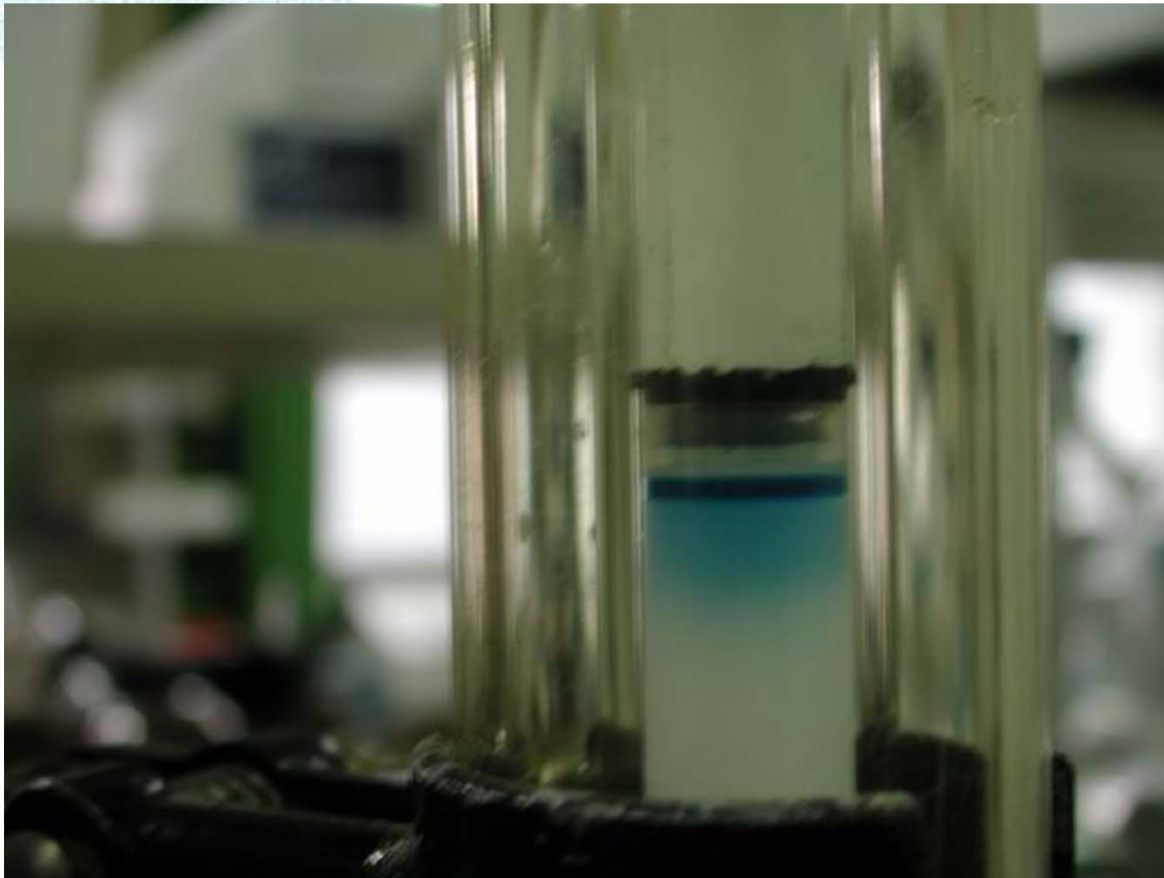
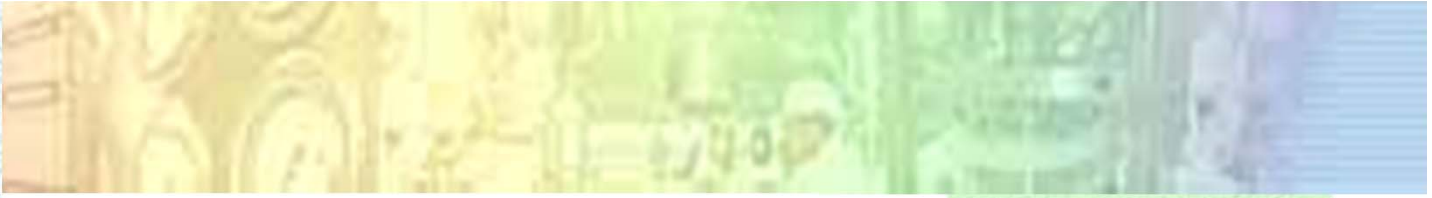
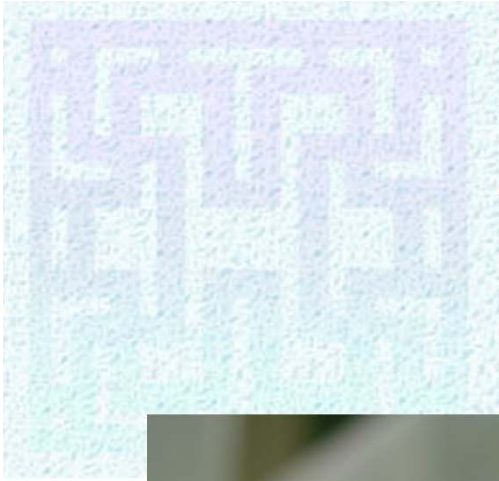
Stopping the outlet line





Connetion of pump
line to the adaptor





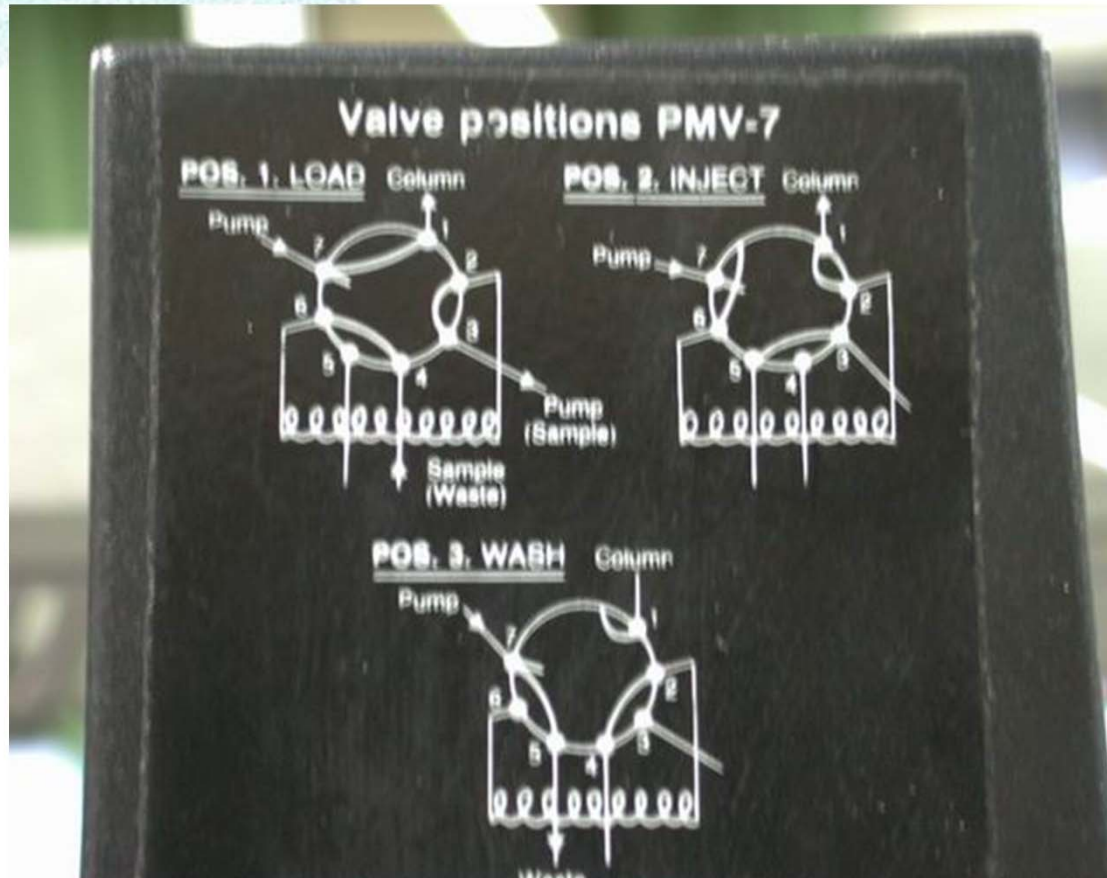
Blue dextran solution flows in the column.

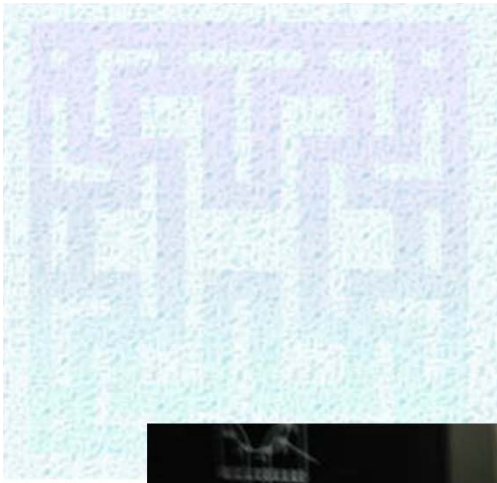


Chungnam
National University



2. Valve control





Injection of sample



3. Remote controller



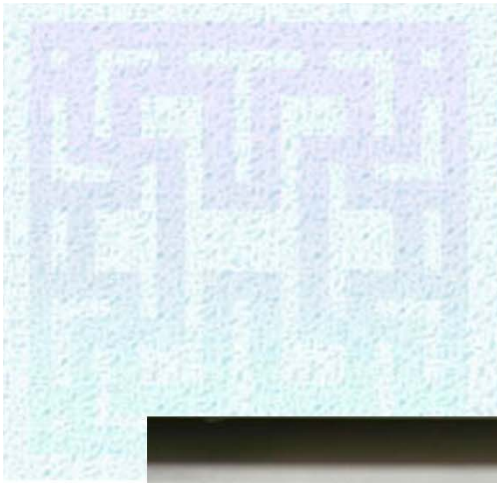
FPLC controller.





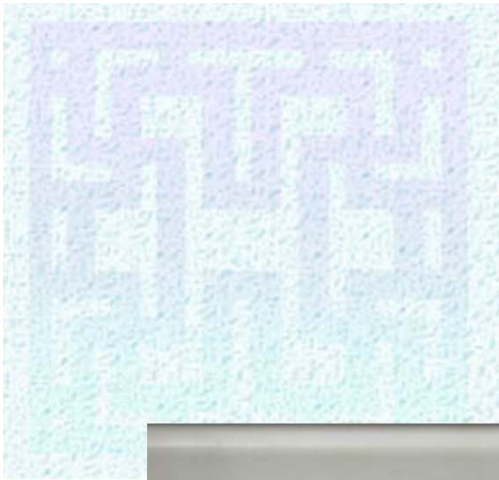
Pump front panel.





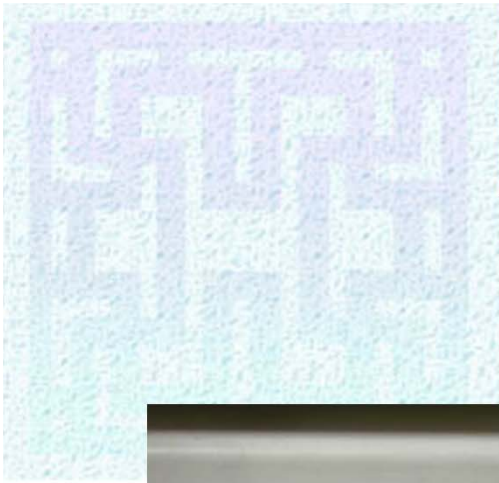
Pump flow rate calibration





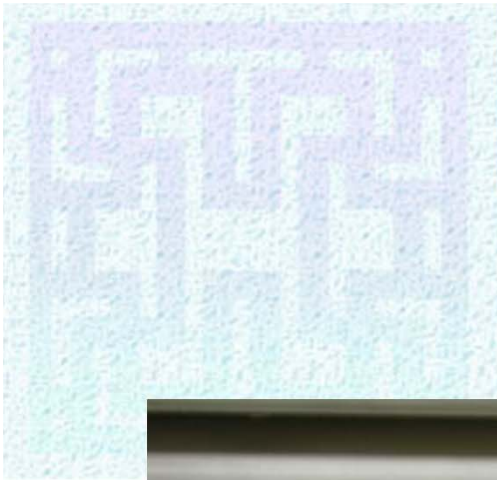
Manual mode of gradient setting





Valve number setting





Flow rate setting



4. Multimeter



Multimeter for digital data acquisition

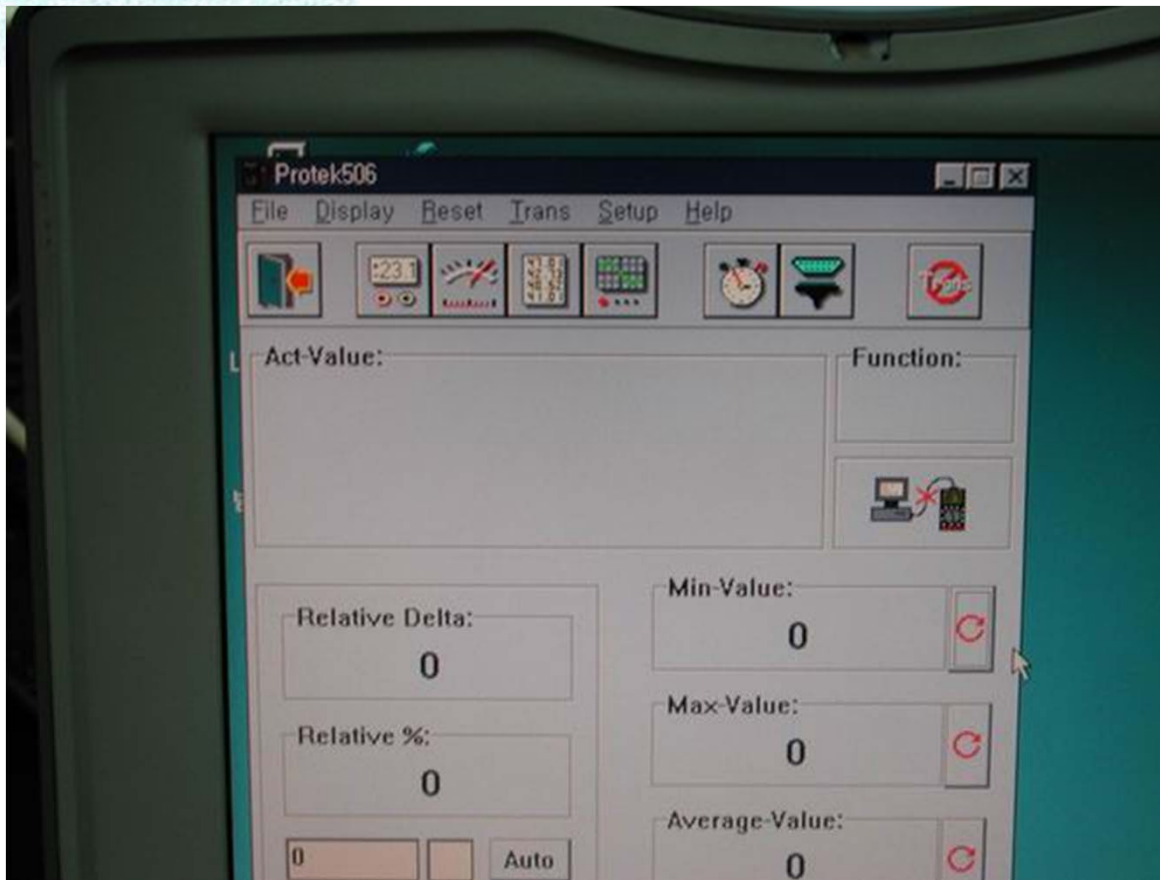
5. Detector



UV detector

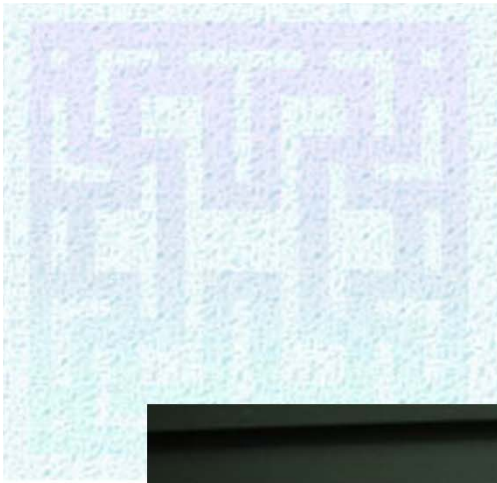


6. Software(PROTEK 506)



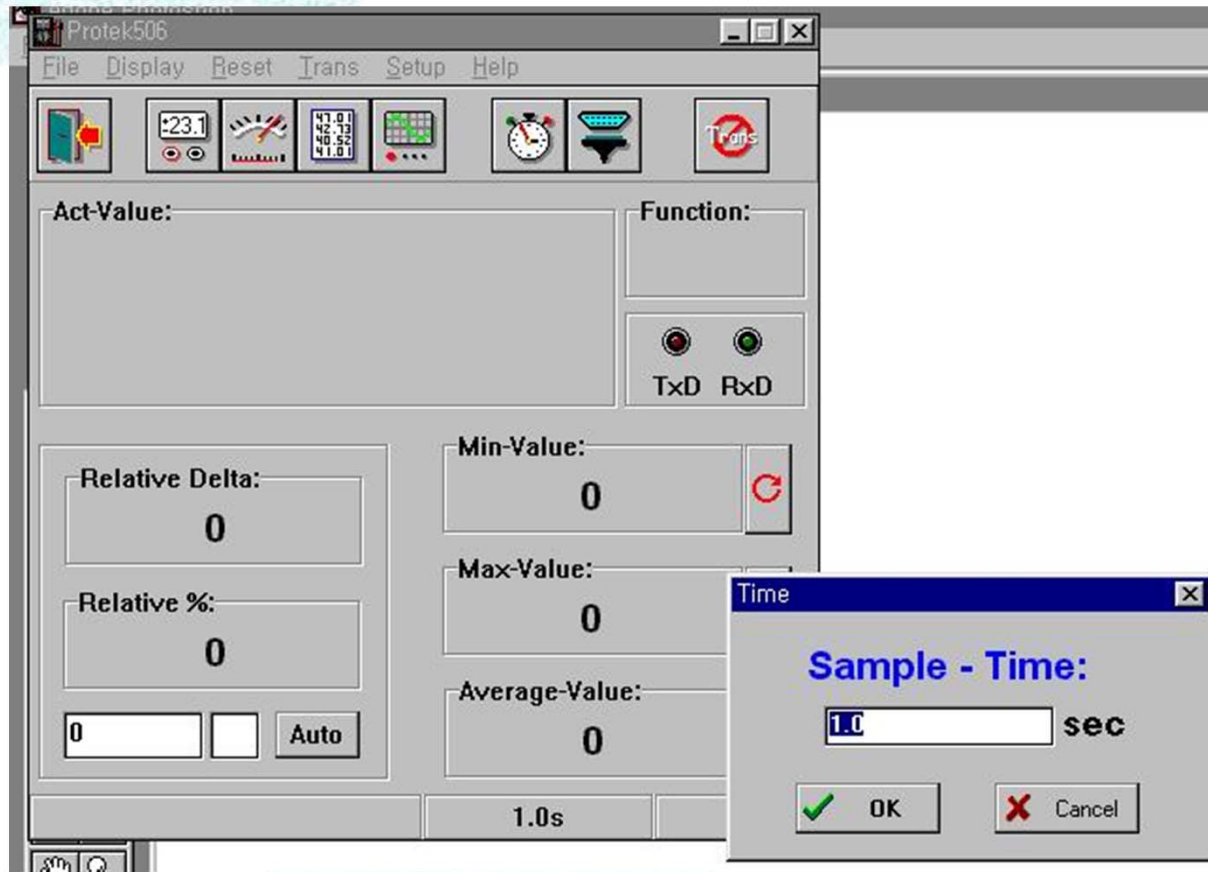
Software UV signal
data acquisition





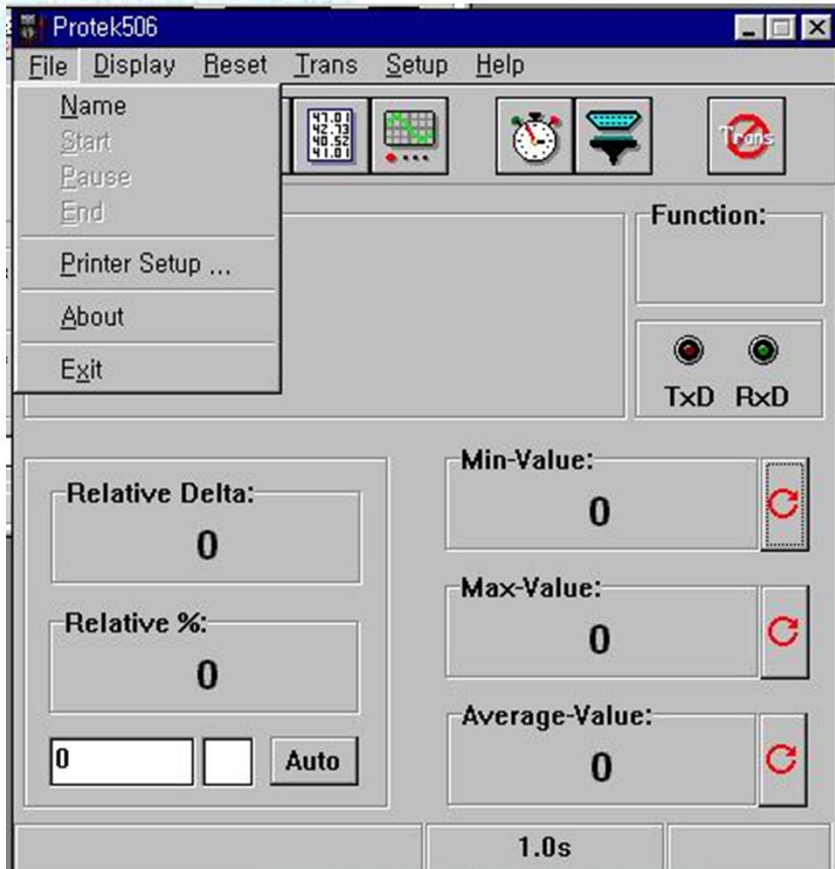
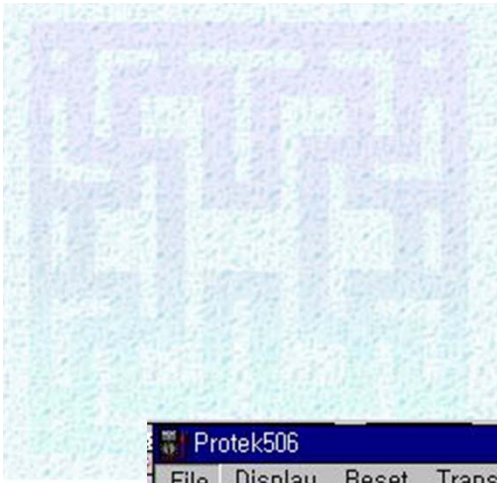
Multimeter setting
for sending data
to notebook computer





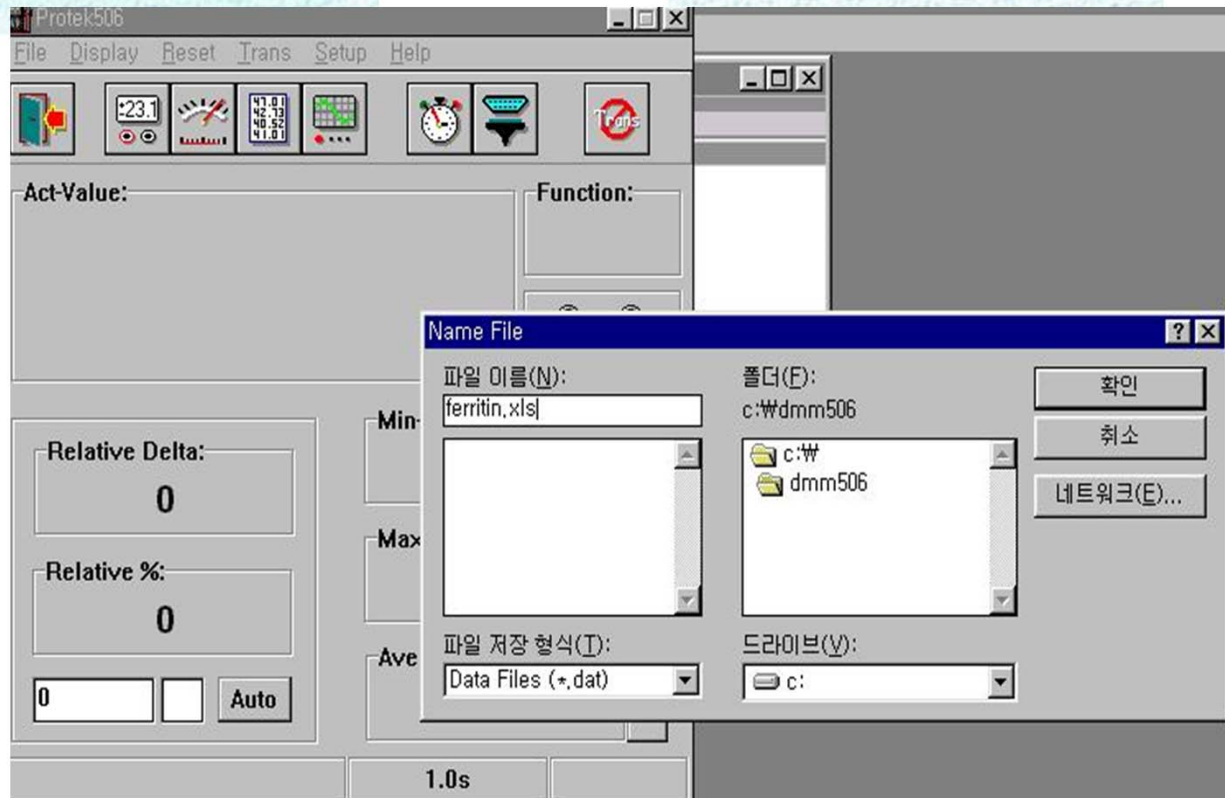
Sampling time setup



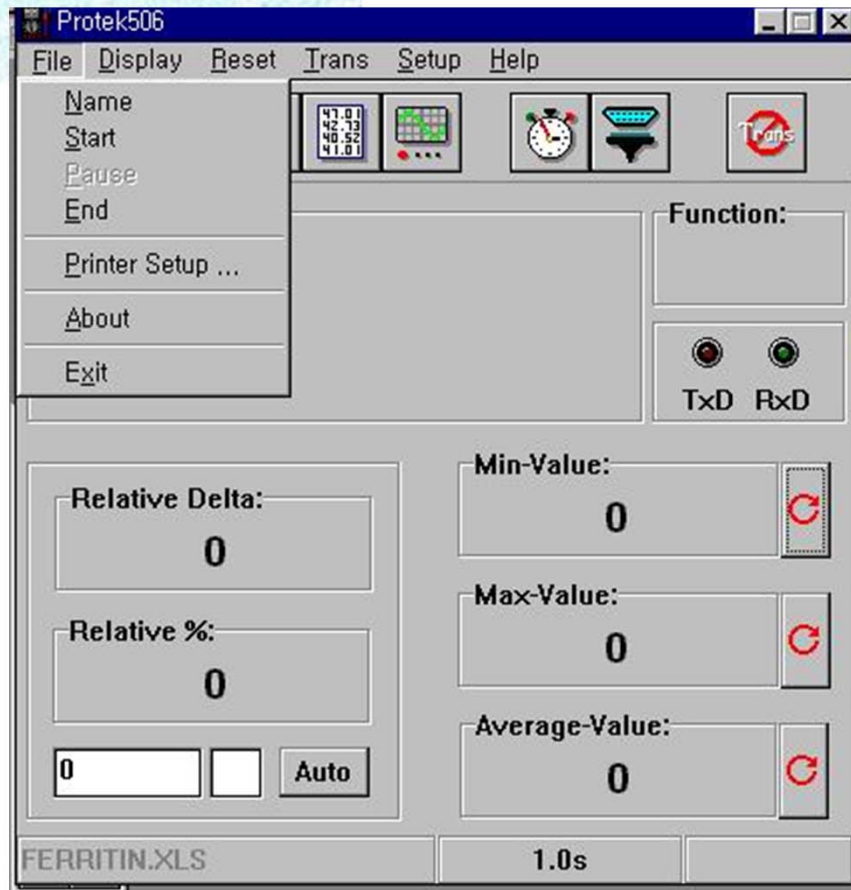


File name.





Save data file
In a folder



Starting data acquisition
Ending data collection

