



**Marker Refill Station:** Refills whiteboard makers overnight, uses capillary action, holds months of ink in reservoir.



**Barbeque Table:** Removable cutting board for meats and veggies, holds sauces, utensils, drinks and more.



**Easy Jar Opener:**Attaches below upper kitchen cabinets, grip jar with two hands and twist cap off easily.



**Bartender's Pour Spout:** Times the pouring of liquor drinks, green-yellow-red LED light sequence shows when one shot is poured.

## Examples A

Sports car



Footware



iMac computer

All photos courtesy of Alessi S.P.A. Products

Kettle with purple bird shaped whistle



Mercolino Toilet Brush



## Examples B



Dr. Skud Flyswatter

## Examples C



Ultrasound machine



Wire Manufacturing Machine

## *Examples D*



Aeron Work Chair



Bicycle

## *Examples E*



Medical equipment



Sports utility vehicle

## Development time and cost...



## Some product examples





[www.ideo.com](http://www.ideo.com)



Vx

**Handheld  
Ultra-slim and  
ultra-light.**

## Acoustic “Listening” Devices



# Integral Product Architectures

- Functional elements are implemented by multiple chunks, or a chunk may implement many functions.
- Interactions between chunks are poorly defined.
- Integral architecture generally increases performance and reduces costs for any specific product model.



**Compact Camera**

etics: Ibook - '  
Cube G4 - Lo



# Product Development Economics Example: Polaroid Color Photo Printer



## Visual Information Example: Book Bag Design



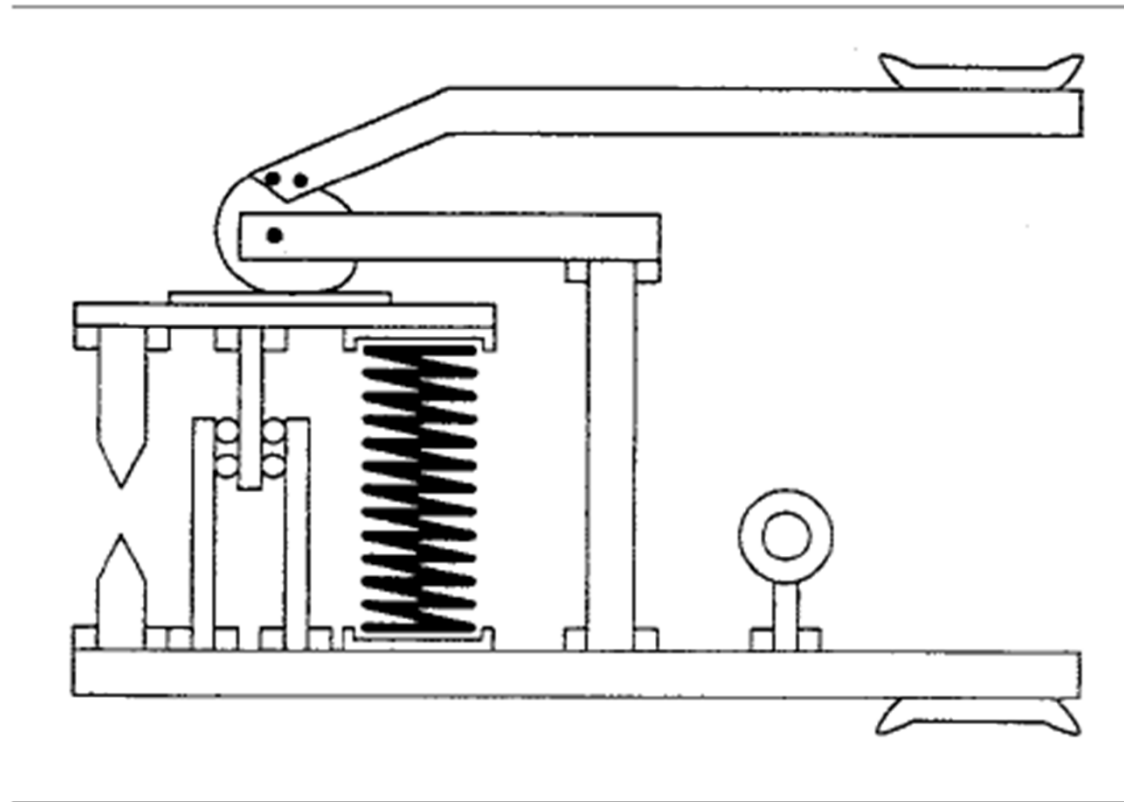
## Example: Stanley Hammer



hardware.com

- Designed in 1995 by Product Genesis for Stanley Tools
- Contractor Grade™
- Graphite composite shaft
- Soft rubber grip
- Sells for \$20

What is this?





# Modular Product Architectures

- Chunks implement one or a few functions entirely.
- Interactions between chunks are well defined.
- Modular architecture has advantages in simplicity and reusability for a product family or platform.



**Swiss Army Knife**



**Sony Walkman**

# Prototyping Example: Apple PowerBook Duo Trackball



# Concept Selection Exercise: Mechanical Pencils



# Concept Testing Example: emPower Electric Scooter



# Customer Needs Example: Cordless Screwdrivers



# Concept Generation Example: Power Nailer



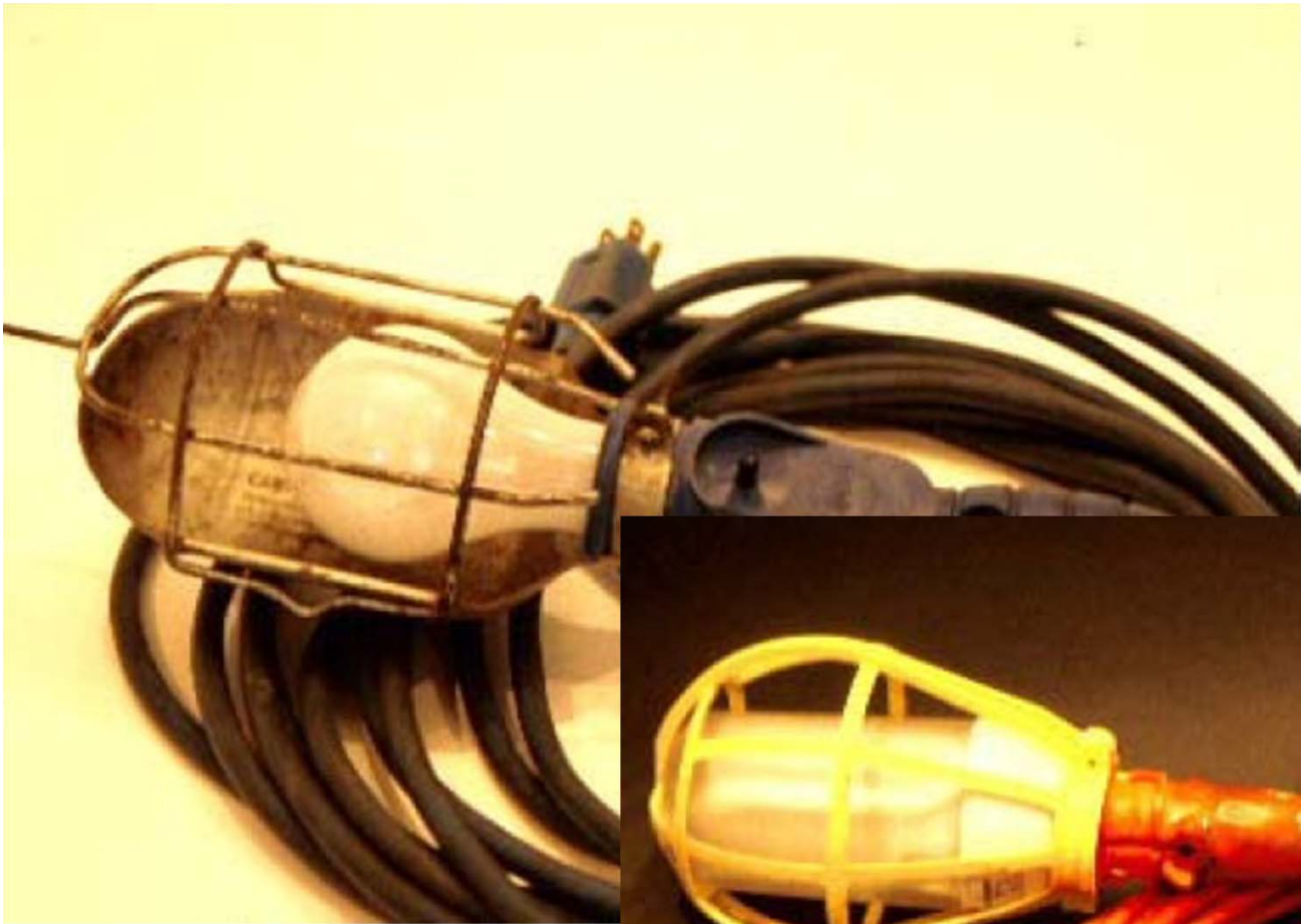
## Concept Generation Exercise: Vegetable Peelers



# Black & Decker SnakeLight Flexible Flashlight



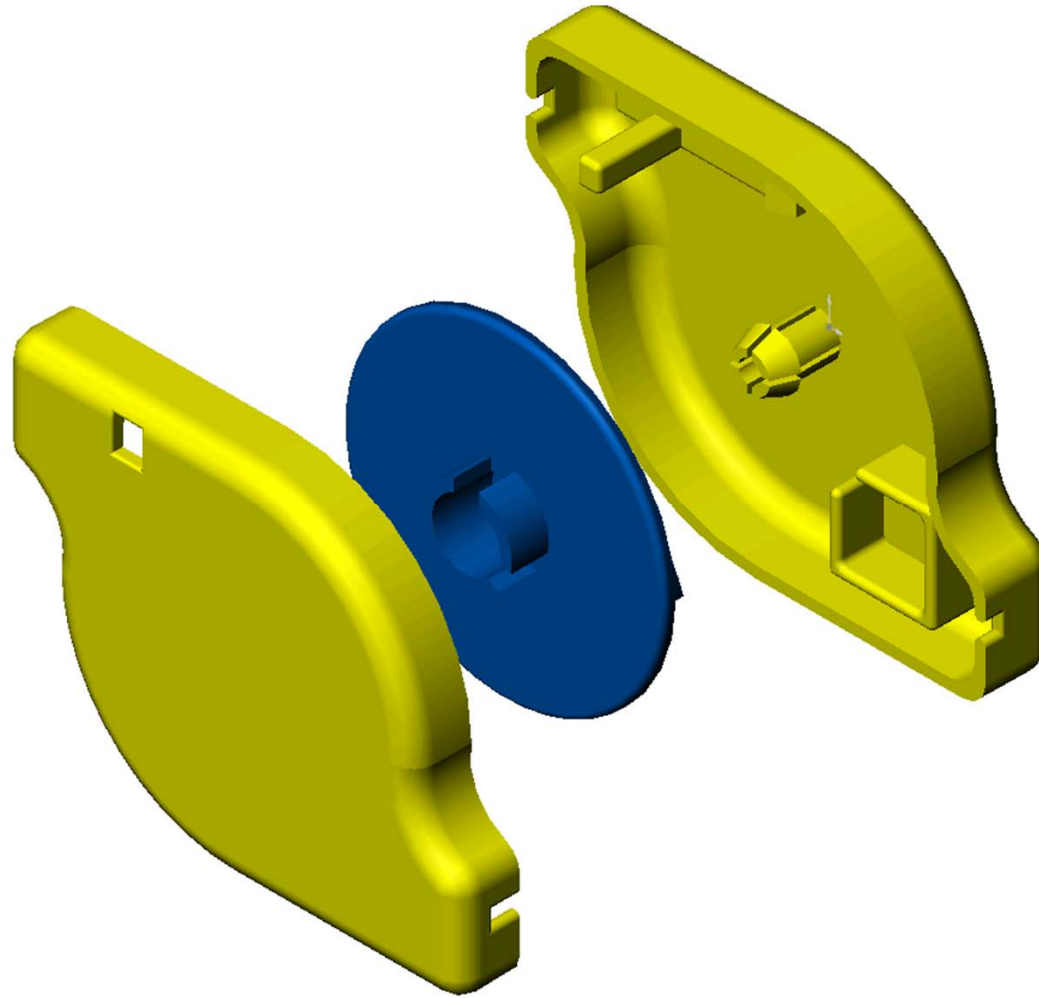






# Simple Assembly

---



## Product Specifications Example: Mountain Bike Suspension Fork



## Special Facilities



The Alternative is equipped with the XLT Preferred Package. This package includes a roomy SuperCab with passenger side access door. In addition, the Alternative is equipped with a color-keyed grille, an enhanced chrome front bumper, and aerodynamically styled halogen headlamps.

### BASELINE

4x4 XLT Package

\$19,200



Buy Baseline

### ALTERNATIVE

4x4 XLT w/SuperCab

\$24,000



Open Door

Close Door

Buy Alternative

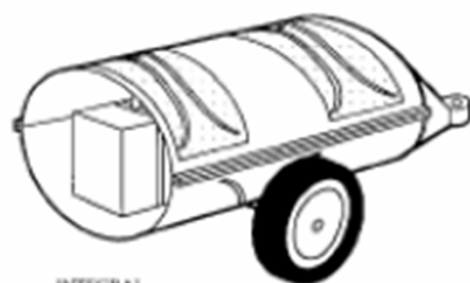
# Ford Taurus Integrated Control Panel



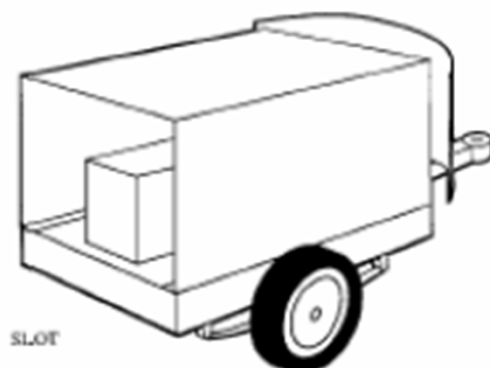


Newer models manufactured by Xerox Corporation.  
Used with permission

# Types of Modularity



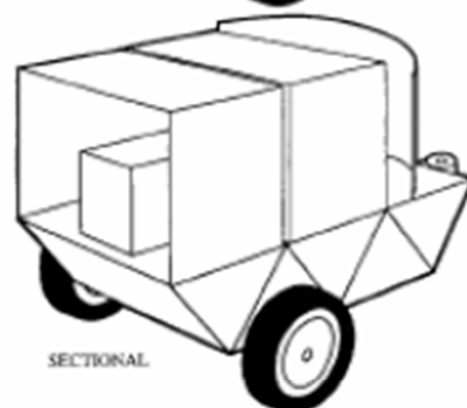
INTEGRAL



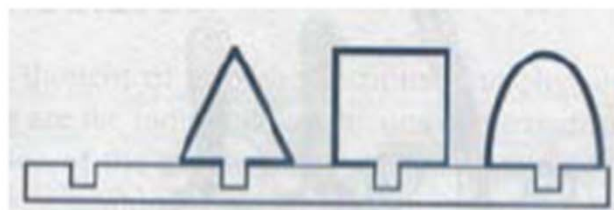
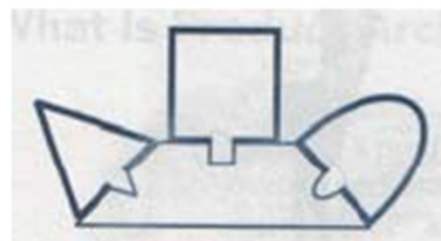
SLOT



BUS



SECTIONAL







# Only in Japan!



..... What's this one about?



# Why do new products flop?

- 28% - the better mousetrap that nobody wanted
- 24% the “me too” product that offered no advantage
- 15% - competitive response
- 13% - technical “dog”
- 13% - cost crunch
- 7% - plain and simple ignorance

From Rick Berg, Katz School of Business, UPitt

# Edison

- 독서가이며 속독, 뛰어난 기억력에 의한 폭넓은 지식의 소유자.
- 대학교육 등 기존의 교육이나 상식을 경시했고 현장교육을 중시했다.
- 왕성한 호기심이나 개척정신과 동시에 집착심, 대항심이 강하고 노력하는 사람.
- 사물을 전체로서 보려는 발상법, 치밀하게 관찰하며 숙고하여 상호관련을 이해한다.
- 장래를 내다보는 선견력이 있으며 사회시스템의 변화를 예측하고 준비한다.
- 발명테마를 선택하는 안목이 뛰어나며, 복수의 프로젝트를 동시에 진행시킨다.