

Fig. X-14. SEM picture of a drop of cooled glass on Fernico metal (which has the same coefficient of thermal expansion), $\times 130$. (From Ref. 183.)

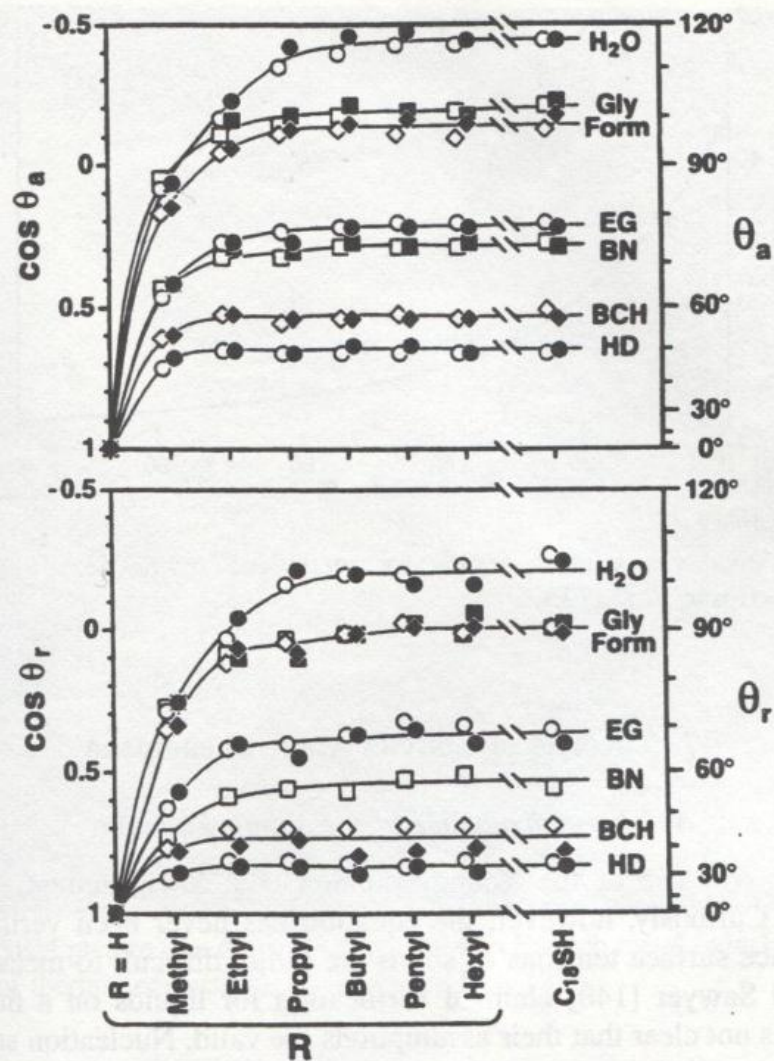


Fig. X-12. Advancing and receding contact angles of various liquids [water (circles), Gly = glycerol (squares), Form = formamide (diamonds), EG = ethylene glycol (circles), BN = α bromonaphthalene (squares), BCH = bicyclohexyl (diamonds), HD = hexadecane (circles)] on monolayers of $\text{HS}(\text{CH}_2)_{16}\text{OR}$ having a range of R groups adsorbed on gold and silver (open and filled symbols respectively). (From Ref. 171.)

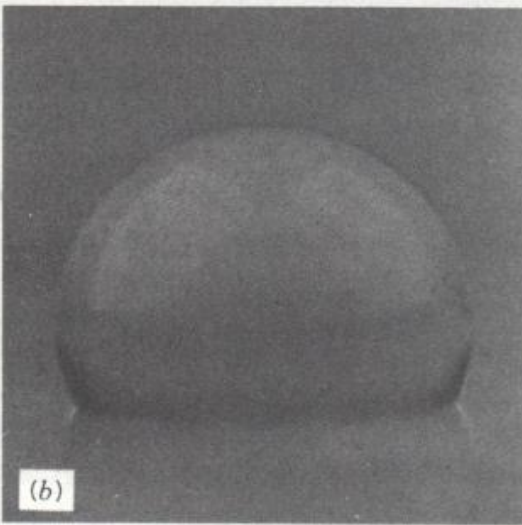
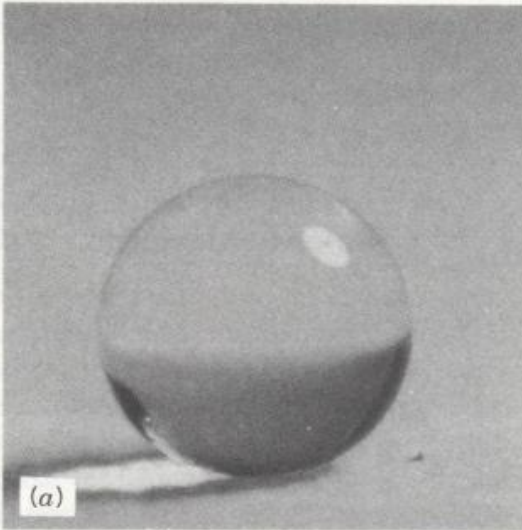


Fig. X-6. Drop of water on an alkylketene dimer surface: (a) fractal surface $D = 2.29$; (b) flat surface. (From Ref. 68.)